

Land and Building Committee

August 30, 2016

1:30 to 3:30pm

Agenda

- Previous Meeting Notes
- West Campus Trail
- Campus Signage Projects
 - West PE Modular
 - Farther Faster Campaign Signs on Patriot Circle
 - Schar School of Policy and Government – temporary banner
 - Arlington Campus Graphics
 - Antonin Scalia School of Law – temporary banners
- Robinson Infrastructure & Building Progress
 - Perkins + Will Program Diagrams
 - Utility Infrastructure Updates
- Future Topics
 - Proposed Water Line
 - Benches & Cubes
 - West Campus/SW Sector Study
 - Housing Demand Study
- Meeting Schedule
 - TBD



- **Mason currently has one trail on campus**
 - Yellow Birch Trail – 1.6 miles in length
 - Follows Patriot Circle
- **In FY16, Mason Recreation conducted 277 surveys with off campus and non-Recreation using students**
 - 66% said walking was their primary physical activity of choice
 - 60% said running was their primary physical activity of choice

Planning Projects: West Campus Running/Walking Trail Naming

- **In Spring 2016, 260 Faculty/Staff members responded to a Quality of Life survey created by Mason Recreation**
 - 80% said walking was their primary physical activity of choice
 - 31% said running was their primary physical activity of choice
- **A 1.2 mile multi-use trail extending from the corner of Patriot Circle & Campus Drive to the corner of Braddock Road & Campus Drive was built in the Campus Drive construction**
- **The trail is not signed, named, or promoted**

- **Proposal: Name and sign the West Campus Trail**
- **Benefits:**
 - Allows campus community members an additional outlet to engage in their favorite physical activities
 - Connection with Yellow Birch Trail makes a 4 mile circuit
 - 1 mile distance from West Campus Lot to Patriot Circle can ease number of West Campus parkers taking shuttle to main campus
 - Campus needs at least 2.0 miles of trail to achieve Partnership for Healthier America designation

Planning Projects: West Campus Running/Walking Trail Naming

= LOCATION OF SIGN/MAP

TRAIL DIRECTION SIGN AT EITHER SIDE OF CROSSWALK

POTENTIAL TRAIL COUNTER LOCATION

MAP AT WHITE BIRCH TRAIL START

WHITE BIRCH TRAIL DIRECTIONAL SIGNS

MILE MARKER FOR OUTBOUND TRIP/TRAIL DIRECTION/MAP

MAP LEGEND

	Academic		Visitor Parking		Construction
	Administrative		Visitor Parking		Construction
	Faculty Parking		Visitor Parking		Construction
	Student Center		Visitor Parking		Construction
	Student Center		Visitor Parking		Construction
	Student Center		Visitor Parking		Construction
	Student Center		Visitor Parking		Construction
	Student Center		Visitor Parking		Construction

MAP AT AFC

START OF TRAIL SIGNS (X2) /MAP/BRADDOCK RD TRAIL DIRECTIONS

START OF TRAIL SIGNS (X2) AND MAP

TRAIL DIRECTION SIGN ON BIKE ROUTE POST FOR EASTBOUND TRAFFIC

TRAIL MAP ON ISLAND

TRAIL DIRECTION SIGN ON BIKE ROUTE POST FOR WESTBOUND TRAFFIC

1 MILE MARKER FOR RETURN TRIP

TRAIL DIRECTION SIGN AT EITHER SIDE OF CROSSWALK

TRAIL DIRECTION SIGN FOR THOSE COMING FROM RAC

Signage Design – Similar to Yellow Birch with Green Sunflower



Map Design – Similar to this signage

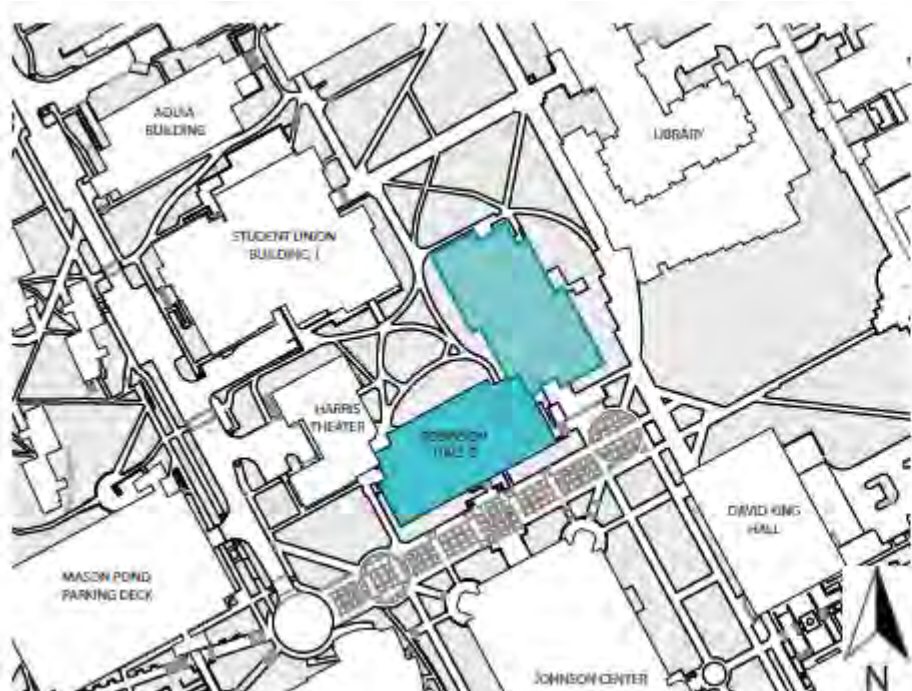


- **Trail name to be decided by naming committee at upcoming meeting**
 - Walking Trails follow names of Virginia native trees
 - Yellow Birch – current trail on campus
 - Proposed names
 - Green Ash
 - Black Cherry
 - Red Dogwood

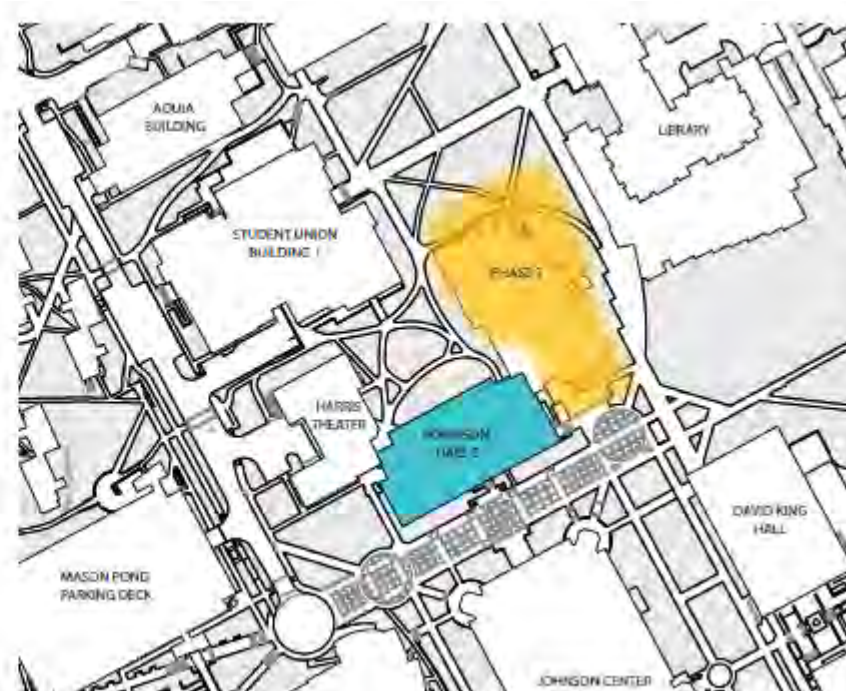
- **Funding**
 - AEMC Grant has been awarded to cover cost of signage and installation
 - \$1,500
 - University Life is working on determining what amount of the \$4,000 trail counter they will cover

Campus Sign Projects

- West PE Modular
- Farther Faster Campaign Signs on Patriot Circle
- Schar School of Policy and Government – temporary banner
- Arlington Campus Graphics
- Antonin Scalia School of Law – temporary banners



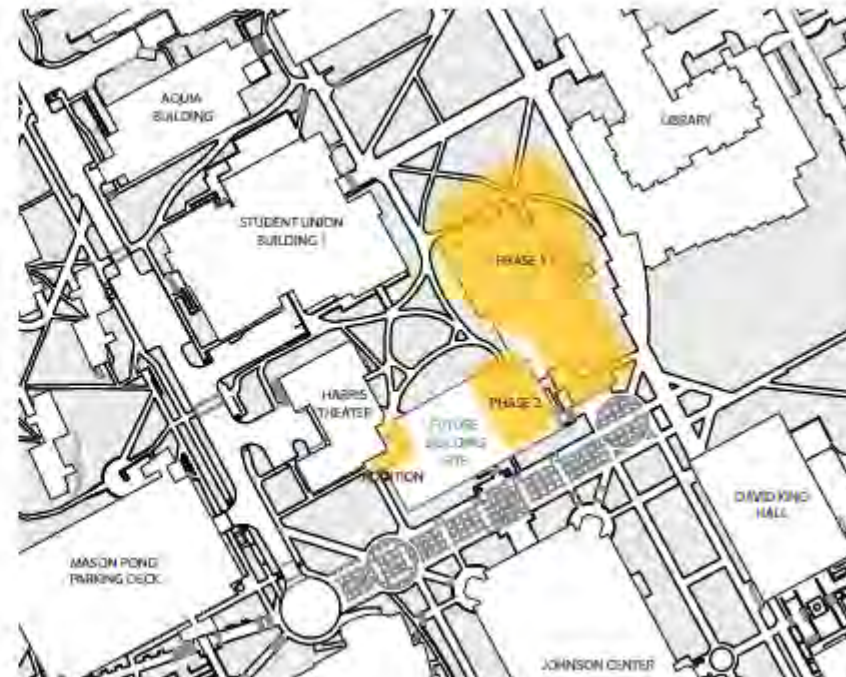
Demo of Robinson A



Construction of Phase 1

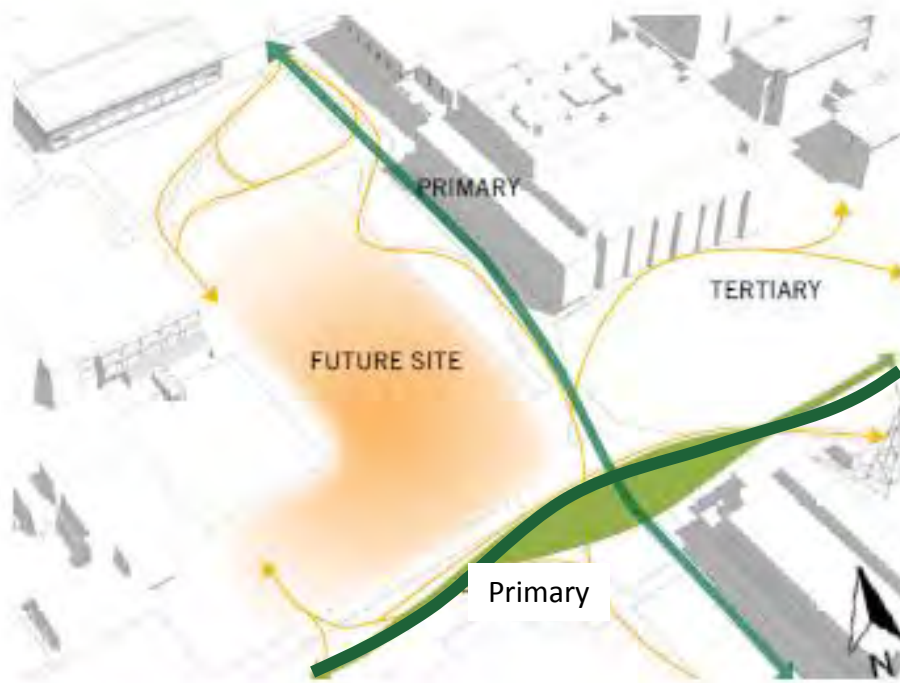


Demo of Robinson B



Construction of Phase 2

SITE DIAGRAMS //



PEDESTRIAN CIRCULATION

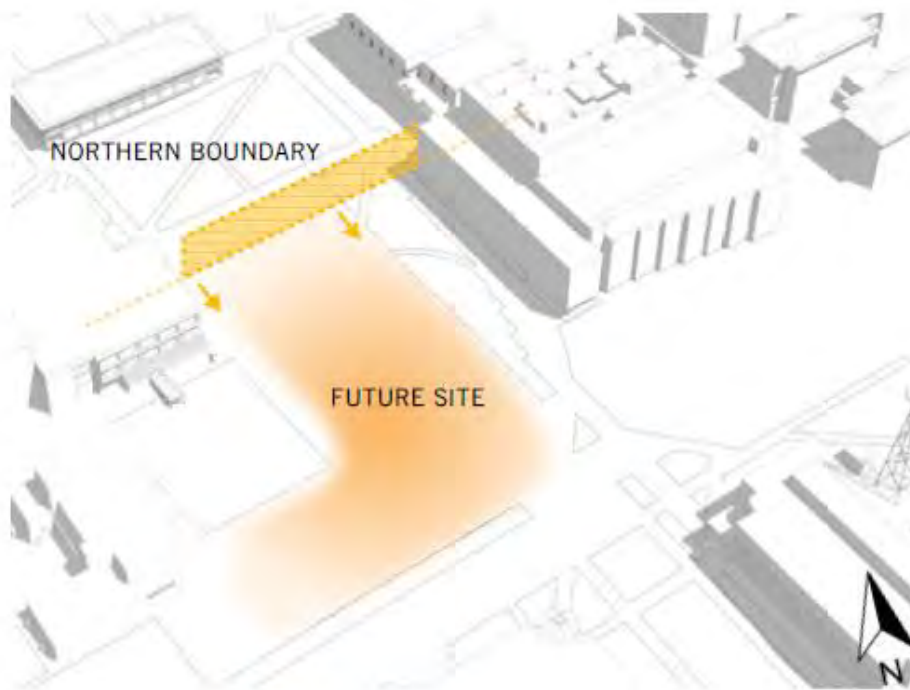
- Primary, secondary and tertiary pedestrian paths around the future Robinson Hall site



CIRCULATION NODE

- Robinson Hall is adjacent to a major campus node of pedestrian access
- the node is often used for event space and can service the front porch of the new Robinson Hall.

SITE DIAGRAMS //



NORTH SITE ALIGNMENT

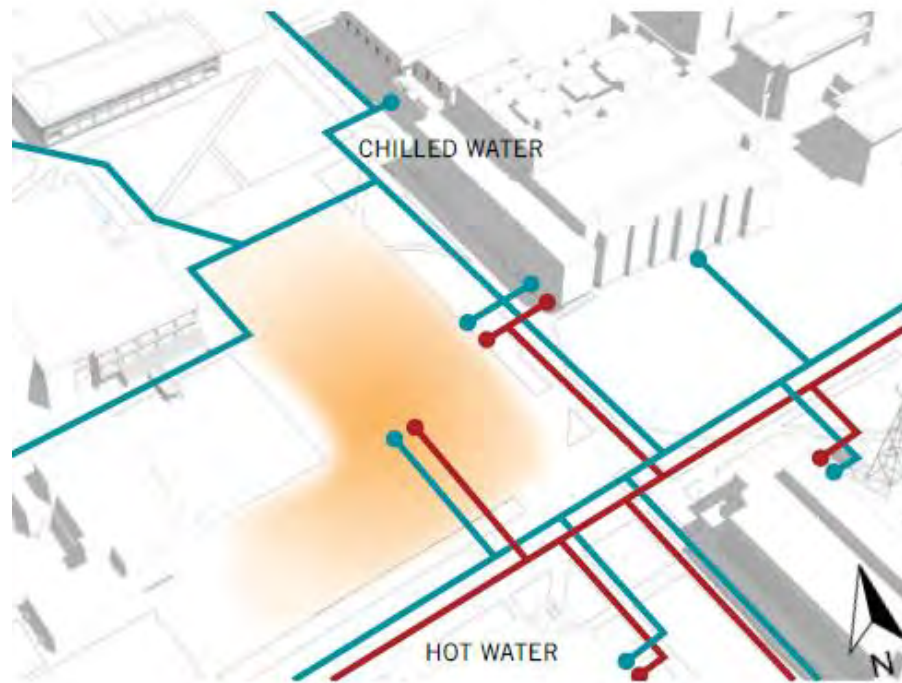
- The site holds to a boundary on the north end that aligns with the new Fenwick Library Addition
- This boundary will allow for a relationship to the campus quad to the north



FIRE LANE

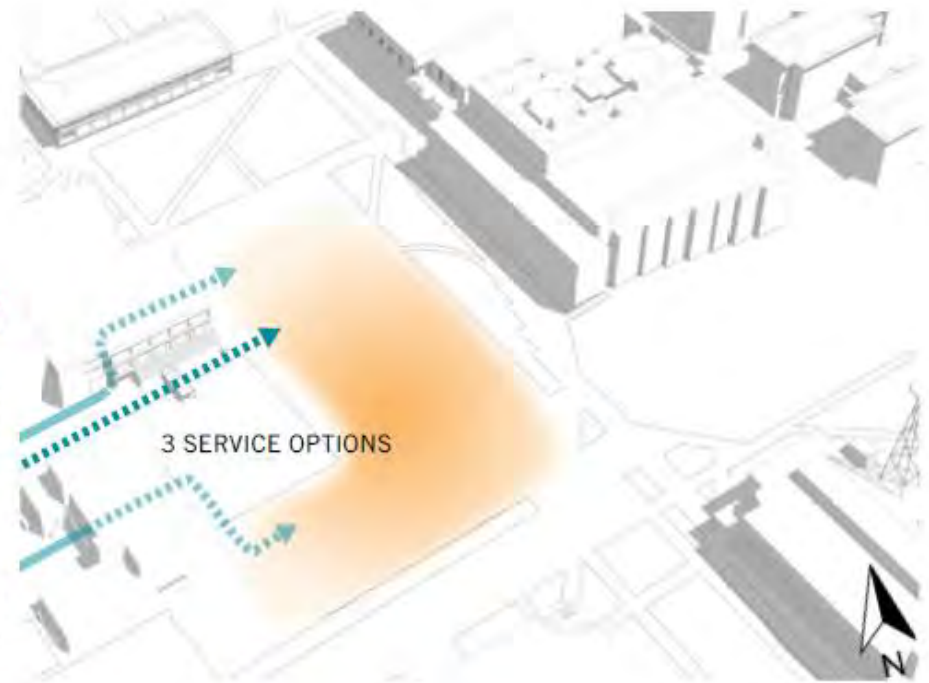
- Fire access lanes are directly adjacent to the site and a future fire lane may extend further east

SITE DIAGRAMS //



UTILITIES

- Chilled and hot water utilities surround the site
- This will be considered along with the Infrastructure Project

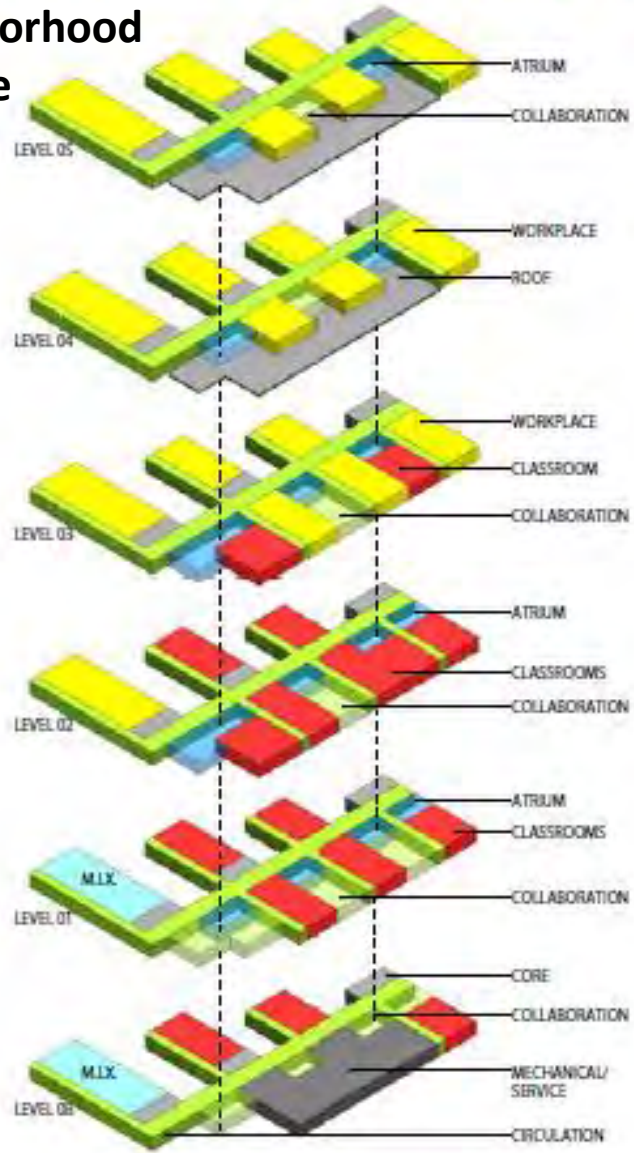


SERVICE ACCESS

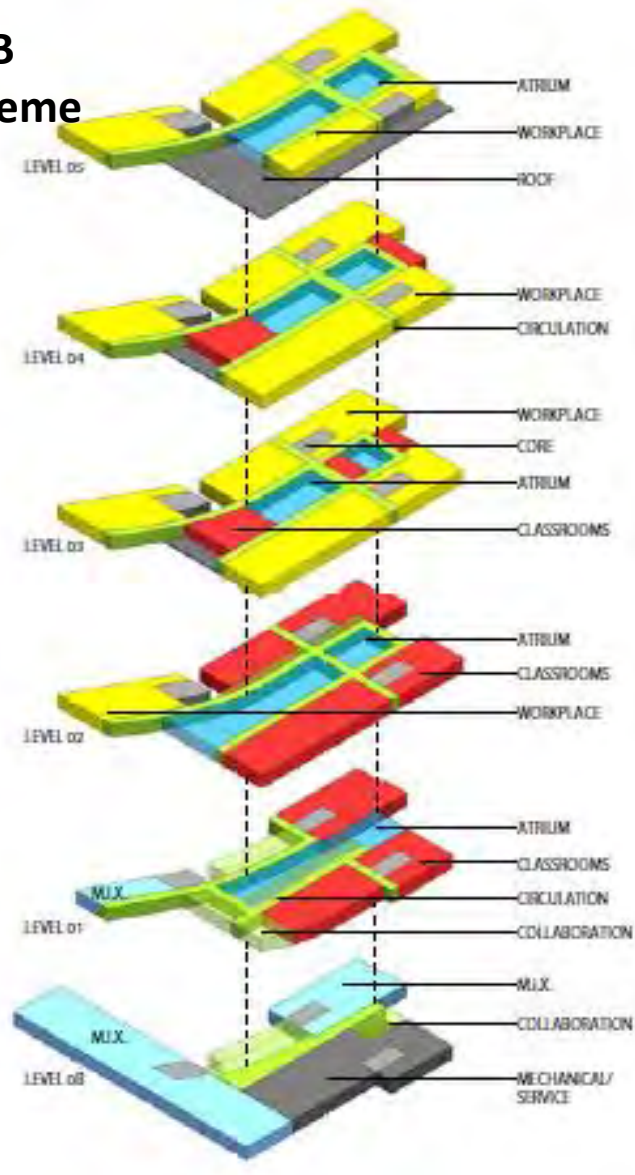
- Robinson Hall may be serviced by 3 potential access points
- The current service drive may be extended to reach the new site, or loading can coincide with loading scenarios of the adjacent buildings

BLOCKING & STACKING // OPTIONS

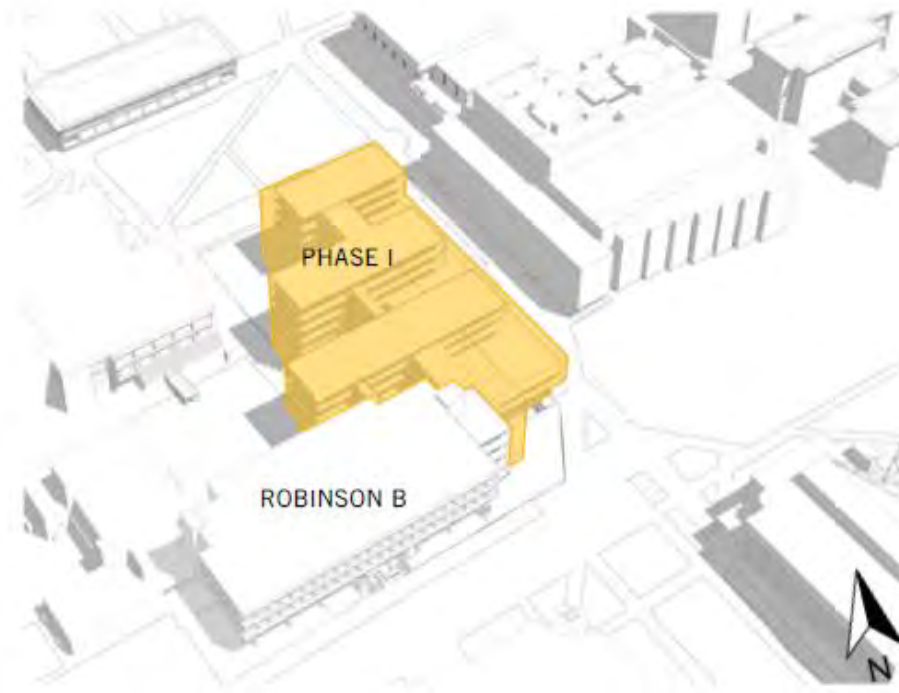
Neighborhood Scheme



HUB Scheme

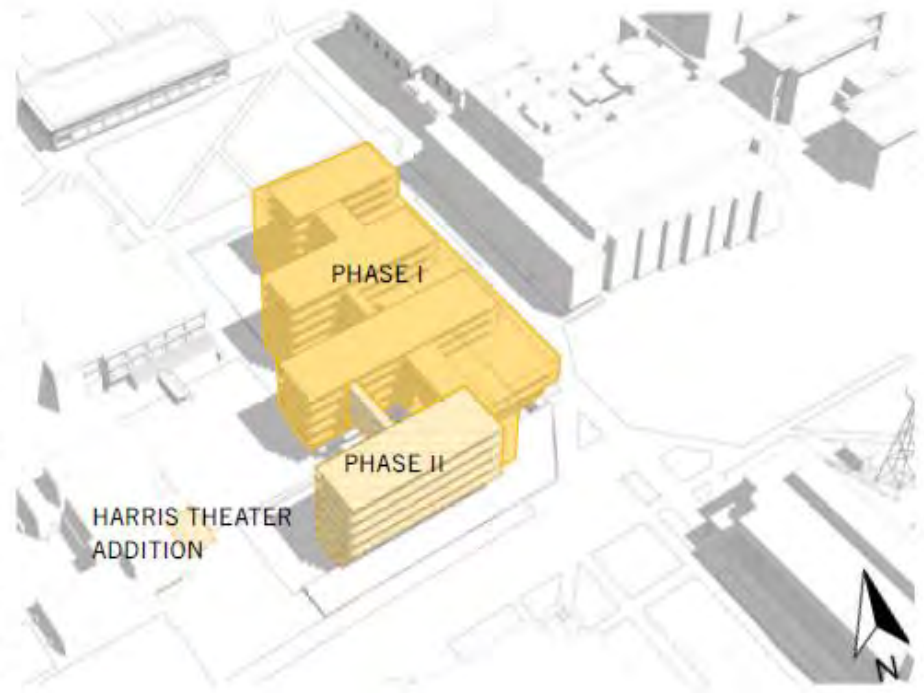


PLANNING CONCEPTS- NEIGHBORHOOD //



PHASE I

- Robinson A will be demolished for the Future Robinson Hall Phase I to be constructed
- It will exist alongside Robinson B until it is demoed for Phase II



PHASE II

- The completed project shows two phases, one of which was completed while Robinson B remained occupied and the second which is constructed after it's demolition

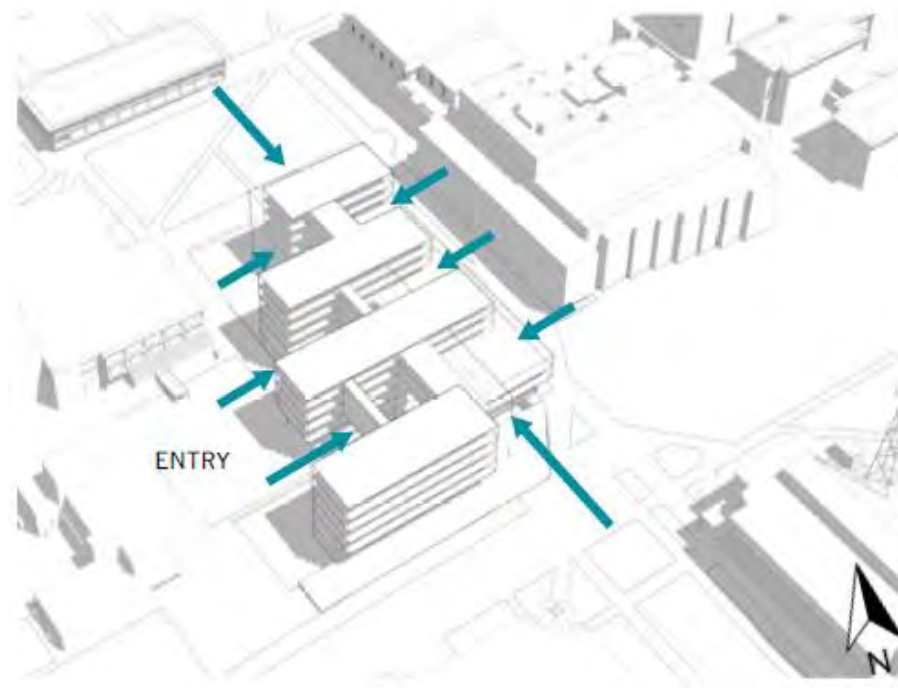
NEIGHBORHOOD // COMMUNITY



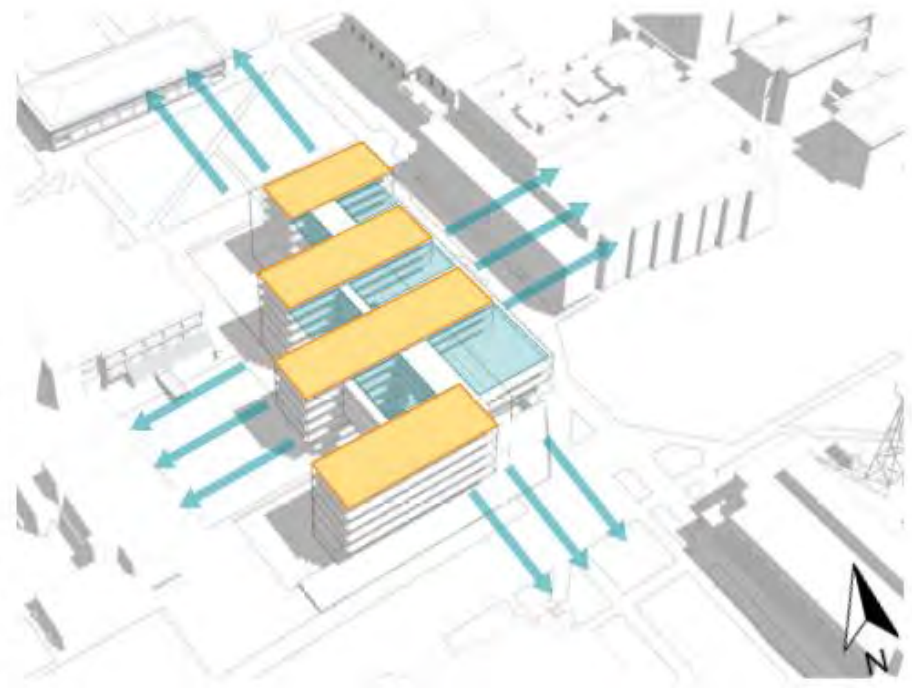
PEDESTRIAN PATH AND GREENSPACE

- The site is surrounded by campus greenspace
- Trees will be preserved to enhance the relationship of the project to nature
- Pedestrian access flows easily around the site or through the new structure

NEIGHBORHOOD // EXPERIENCE



ENTRY



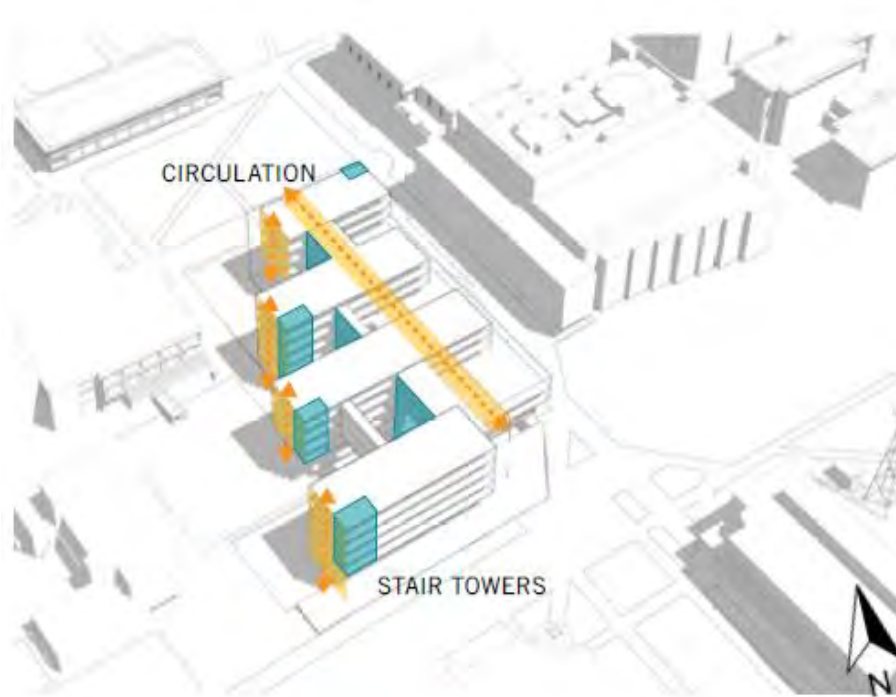
INVITATION SPACE

- Neighborhood option demonstrates several neighborhood units which break down the scale of the building
- the scale allows for smaller, inviting units and multiple points of access for users

VIEWS TO MASON

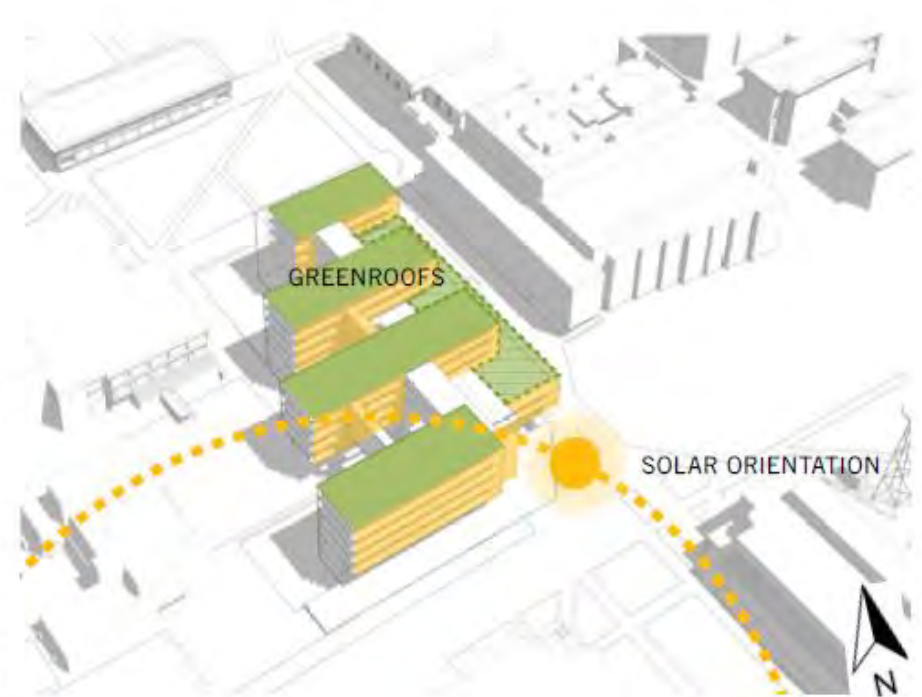
- The organization of the neighborhoods provide many opportunities for transparency of the envelope and therefore, views to the surrounding campus

NEIGHBORHOOD // WELLNESS



HORIZONTAL AND VERTICAL CIRCULATION

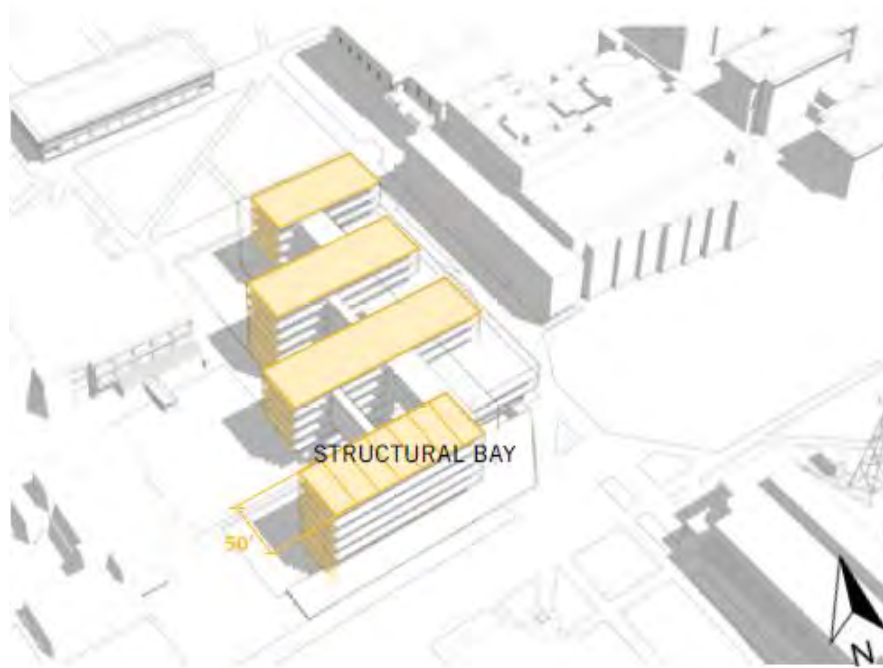
- Multitude of vertical and horizontal circulation enhances the space with activity and encourages users to take the stairs, promoting wellness
- open stairs occur along the central atrium or active hub of the building.



DAYLIGHTING AND GREENROOFS

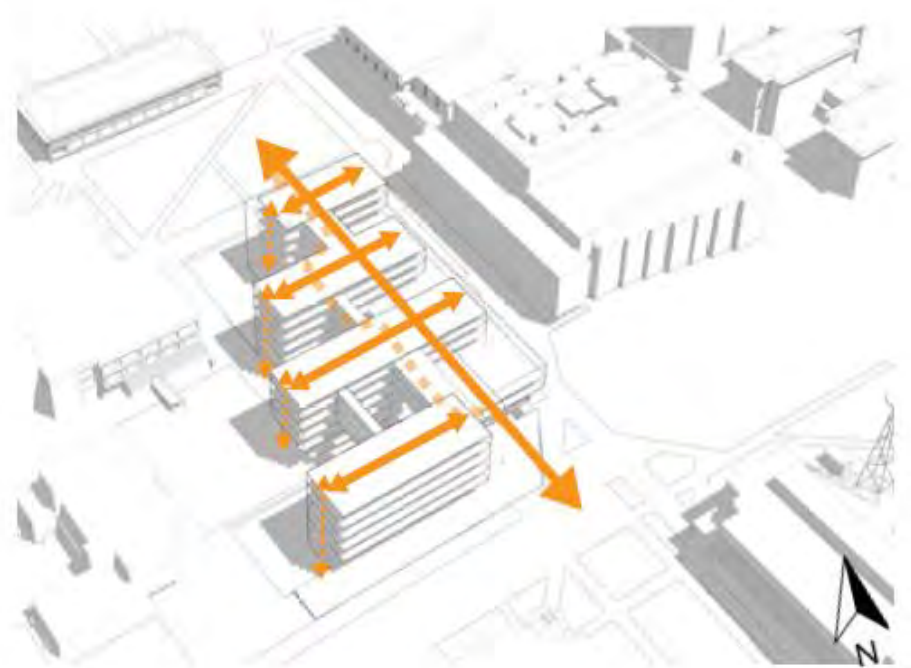
- The transparency of the envelope will allow natural daylight to sweep into the interior throughout the day, encouraging productivity and activity amongst users
- Greenroofs provide further access to nature and sustainability benefits

NEIGHBORHOOD // AGILITY



STRUCTURAL CLEARSPAN

- A 50' module of the neighborhood's structural bay encourages flexibility throughout the project, promoting an agile interior that may transform over time and change along with the University programs



VERSATILE CIRCULATION

- Organization of the bars allows for flexibility in circulation throughout the project, promoting further flexibility in the interior space layouts

NEIGHBORHOOD // VIEW FROM SOUTHEAST



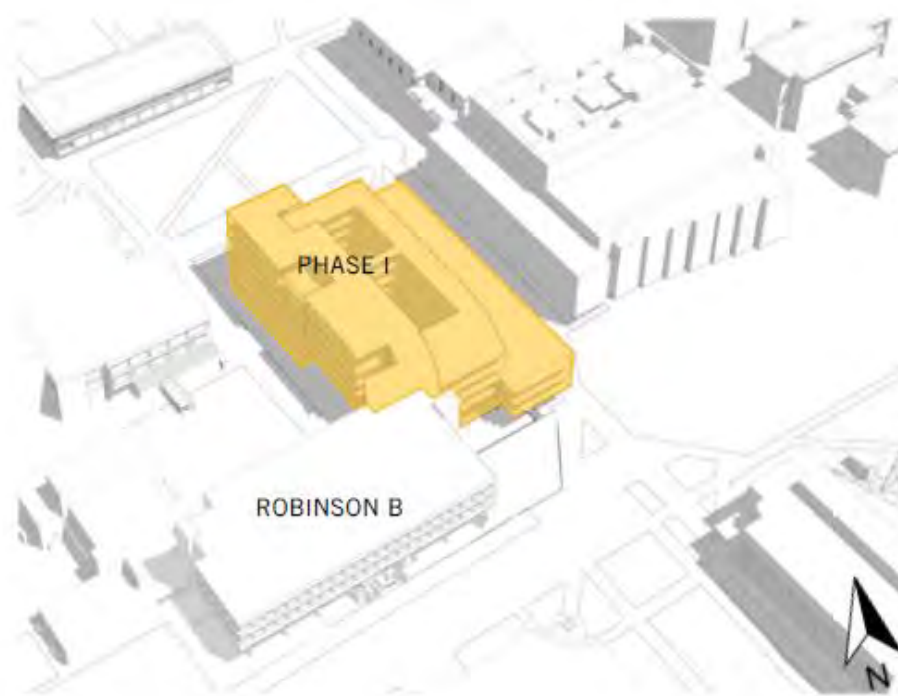
NEIGHBORHOOD // VIEW FROM NORTHEAST



NEIGHBORHOOD // SECTION PERSPECTIVE - SOUTH VIEW

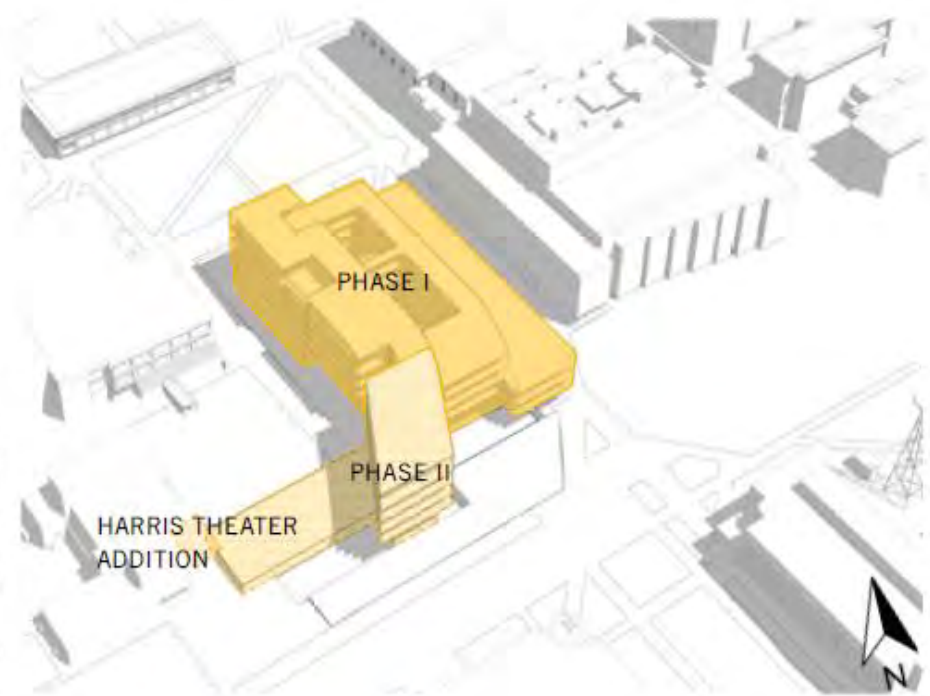


PLANNING CONCEPTS- HUB //



PHASE I

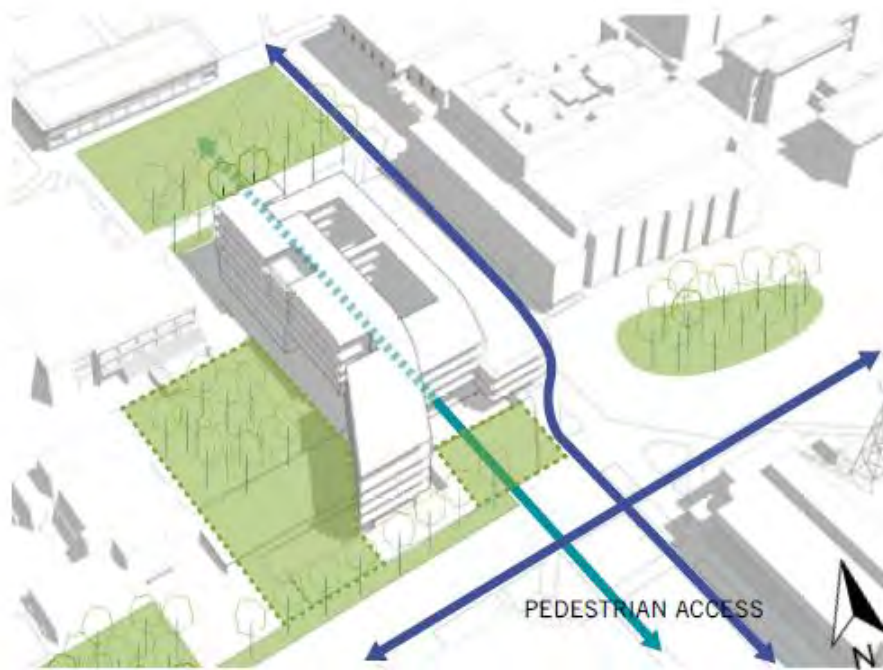
- Robinson A will be demolished for the Future Robinson Hall Phase I to be constructed
- It will exist alongside Robinson B until it is demoed for Phase II



PHASE II

- The completed project shows two phases, one of which was completed while Robinson B remained occupied and the second which is constructed after it's demolition

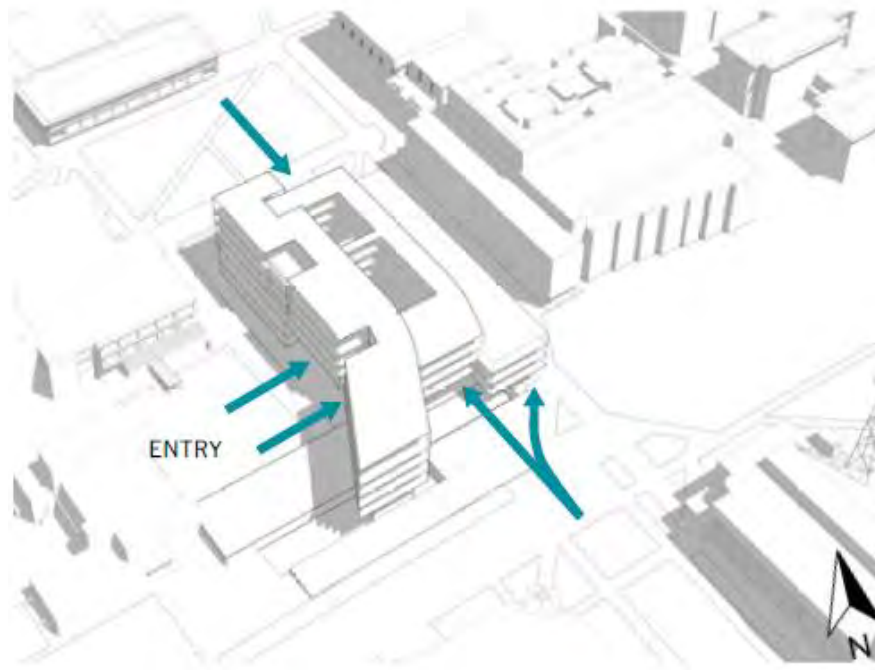
HUB // COMMUNITY



PEDESTRIAN PATH AND GREENSPACE

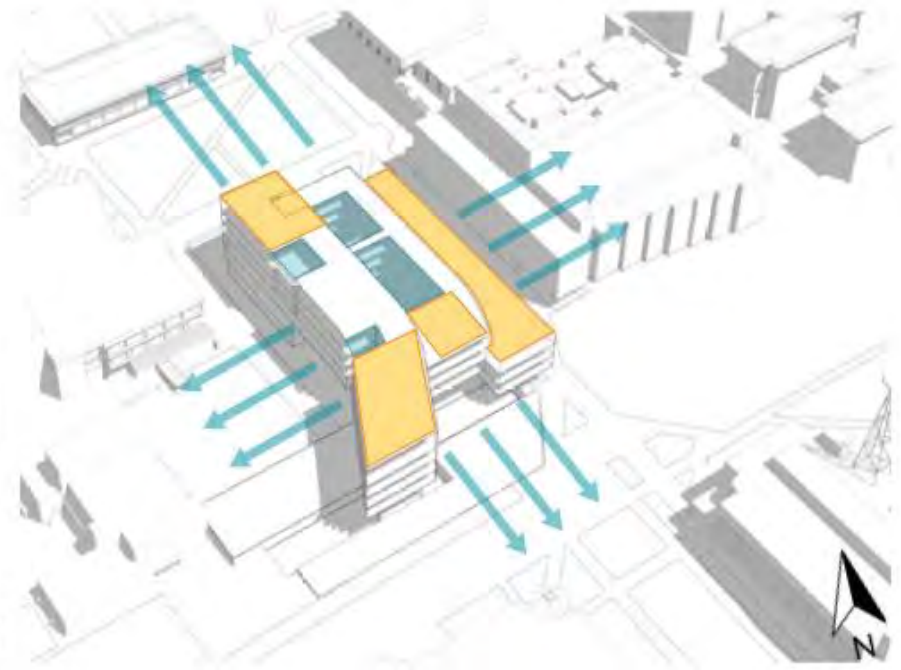
- The site is surrounded by campus greenspace
- Trees will be preserved to enhance the relationship of the project to nature
- Pedestrian access flows easily around the site or through the new atrium space

HUB // EXPERIENCE



INVITATION SPACE

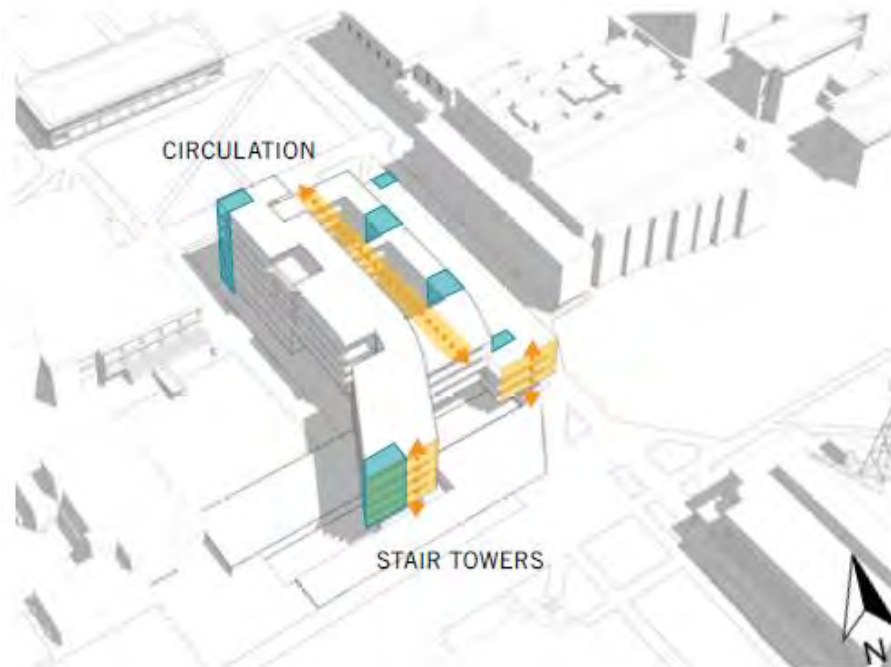
- The Hub planning option contains an interior atrium space that invites users to enter the building
- Several entry points are available
- once inside, the atrium becomes a hub of activity and user interaction



VIEWS TO MASON

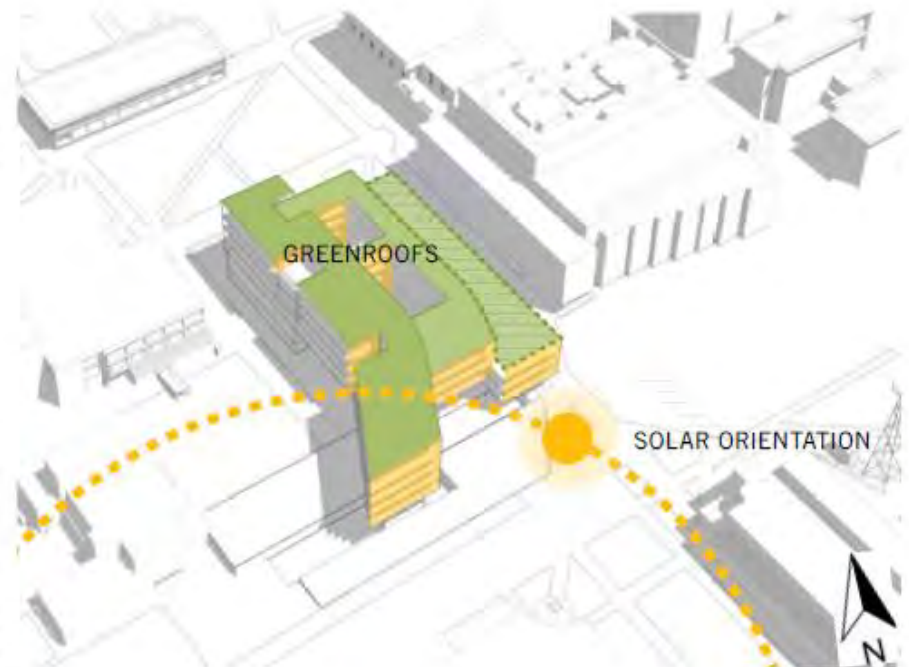
- The option steps downward in elevation toward the library, allowing views across campus, but maintains the current Robinson courtyard for views to nature, blurring the lines between interior and exterior

HUB // WELLNESS



HORIZONTAL AND VERTICAL CIRCULATION

- vertical and horizontal circulation encourages users to take the stairs, promoting wellness
- open stairs occur along the central atrium and are the most inviting path toward classrooms and informal learning spaces



DAYLIGHTING AND GREENROOFS

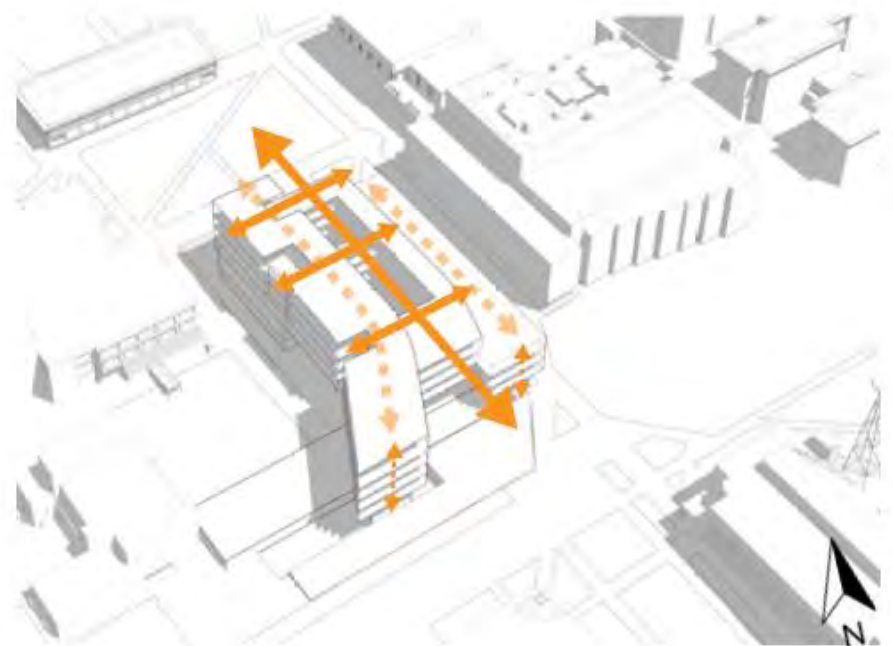
- The transparency of the envelope will allow natural daylight to sweep into the interior throughout the day, encouraging productivity and activity amongst users
- Greenroofs provide further access to nature

HUB // AGILITY



STRUCTURAL CLEARSPAN

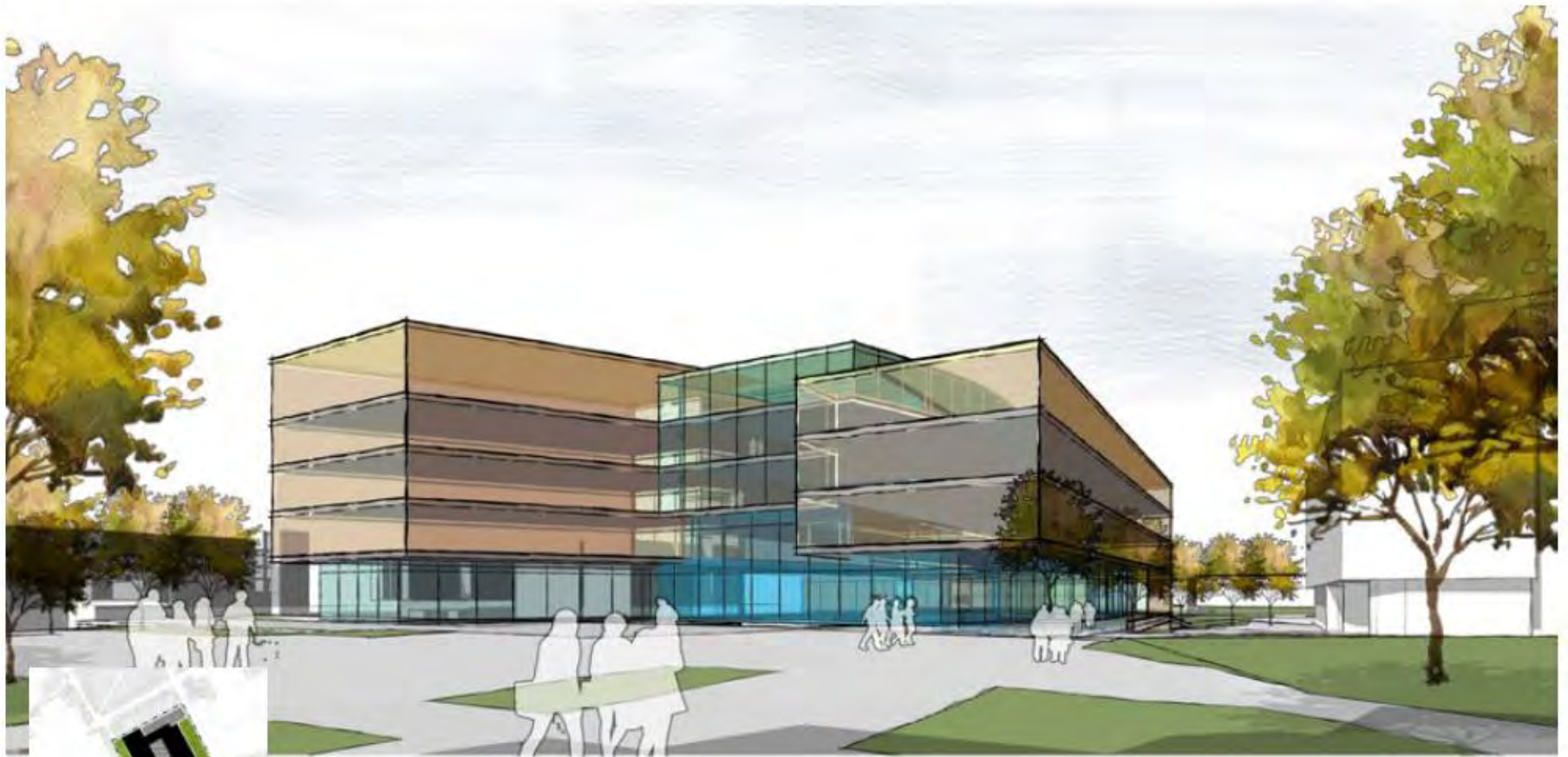
- A 60' and 50' module structural bay encourages flexibility throughout the project, promoting an agile interior that may transform over time and change along with the University programs



VERSATILE CIRCULATION

- Organization of the bars allows for flexibility in circulation throughout the project, promoting further flexibility in the interior space layouts

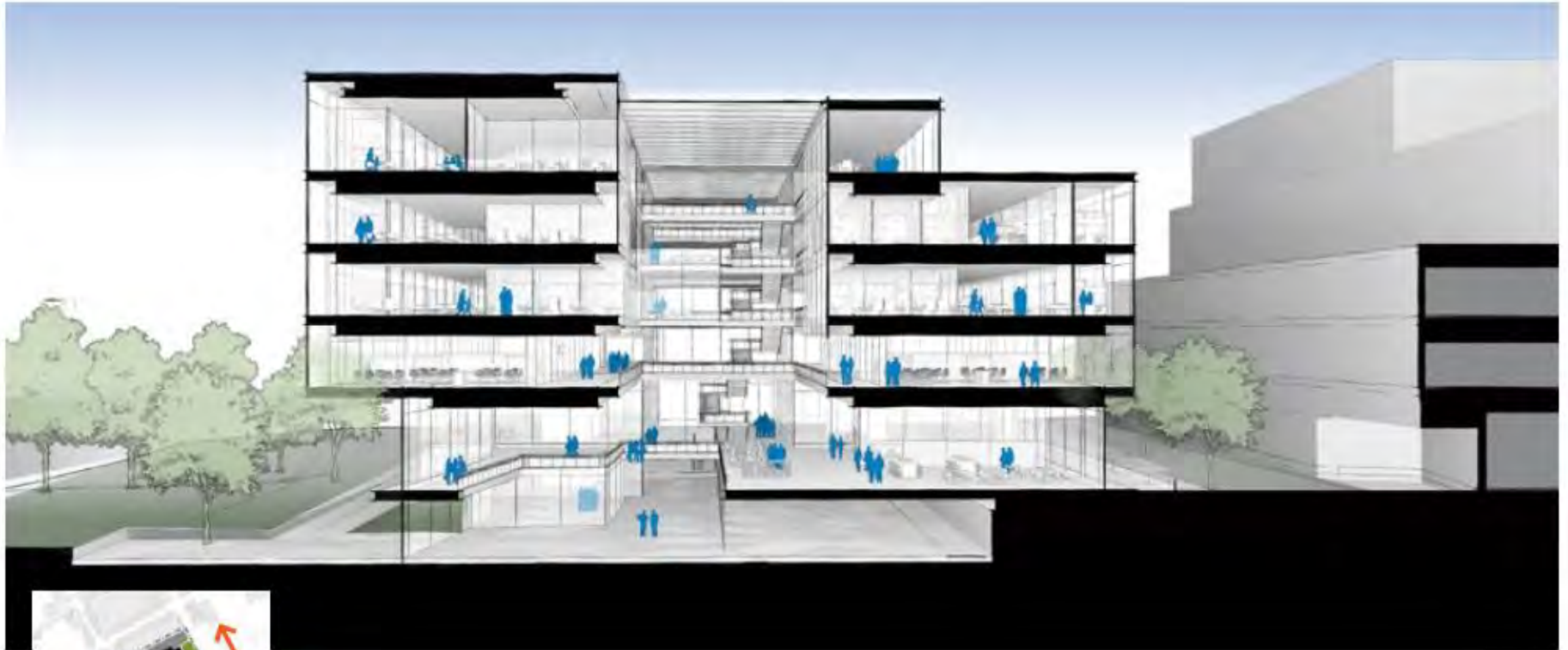
HUB // VIEW FROM SOUTHEAST



HUB // VIEW FROM NORTHEAST

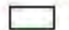





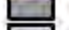







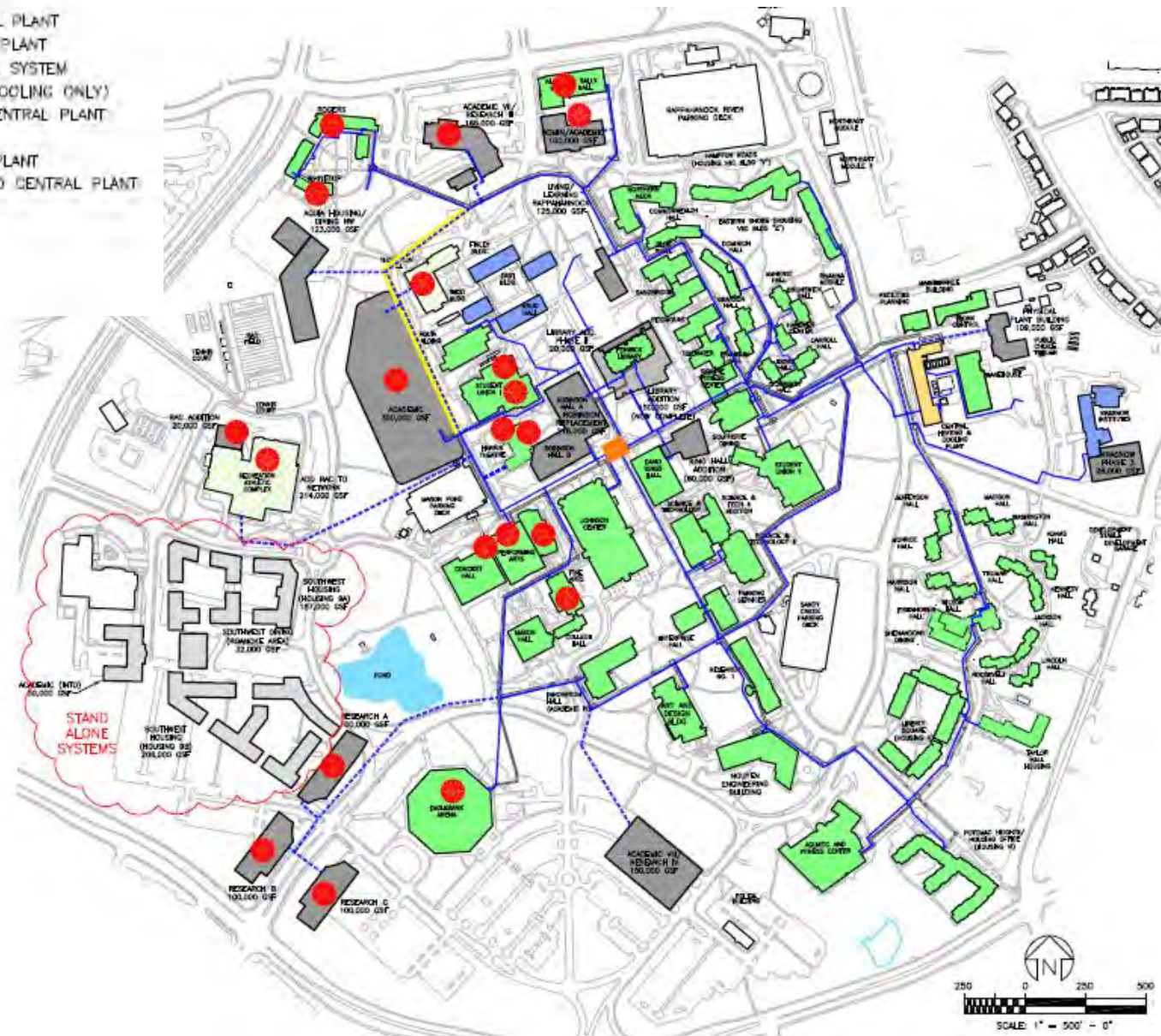
HUB // SECTION PERSPECTIVE - SOUTH VIEW



Utility Master Plan Update – Document Completed – Chilled Water System

LEGEND

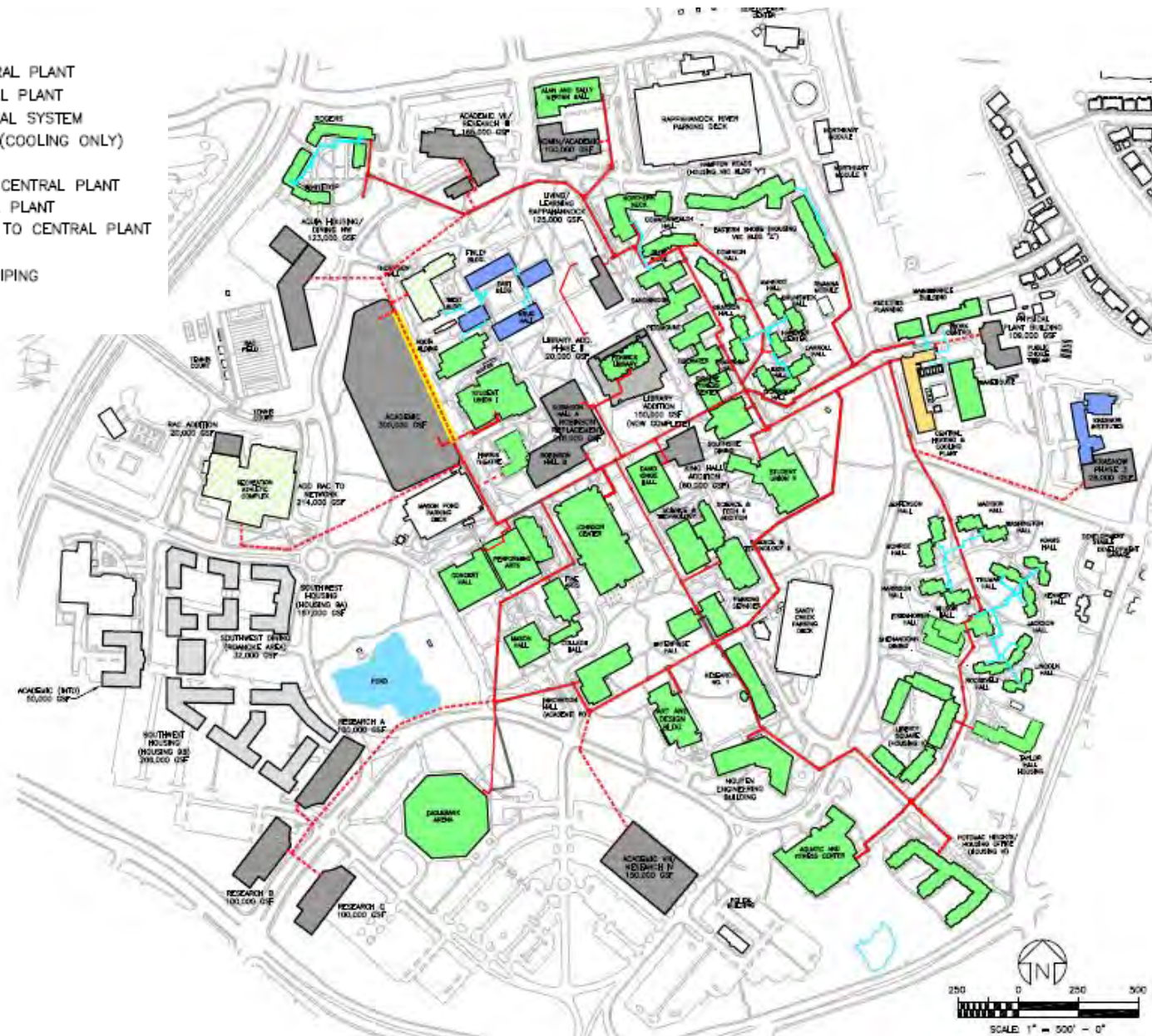
-  BUILDINGS NOT CONNECTED TO THE CENTRAL PLANT
-  EXISTING BUILDING CONNECTED TO CENTRAL PLANT
-  BUILDING RECENTLY CONNECTED TO CENTRAL SYSTEM
-  BUILDING CONNECTED TO CENTRAL PLANT (COOLING ONLY)
-  EXISTING BUILDING TO BE CONNECTED TO CENTRAL PLANT
-  CENTRAL HEATING AND COOLING PLANT
-  FUTURE BUILDING CONNECTED TO CENTRAL PLANT
-  FUTURE BUILDING NOT TO BE CONNECTED TO CENTRAL PLANT
-  EXISTING CHILLED WATER PIPING
-  FUTURE CHILLED WATER PIPING
-  FUTURE LOOP PIPING
-  BUILDING REQUIRING BUILDING PUMP PIPING WITH HIGH VELOCITY



Utility Master Plan Update – Document Completed – Hot Water System

LEGEND

- BUILDINGS NOT CONNECTED TO THE CENTRAL PLANT
- EXISTING BUILDING CONNECTED TO CENTRAL PLANT
- BUILDING RECENTLY CONNECTED TO CENTRAL SYSTEM
- BUILDING CONNECTED TO CENTRAL PLANT (COOLING ONLY)
- CENTRAL HEATING AND COOLING PLANT
- EXISTING BUILDING TO BE CONNECTED TO CENTRAL PLANT
- FUTURE BUILDING CONNECTED TO CENTRAL PLANT
- FUTURE BUILDING NOT TO BE CONNECTED TO CENTRAL PLANT
- EXISTING HOT WATER PIPING
- EXISTING LOW TEMPERATURE HOT WATER PIPING
- FUTURE HOT WATER PIPING
- COMPLETION OF FUTURE LOOP PIPING



Updates & Future Topics:

- **Future Topics:**
 - Robinson Hall/Infrastructure - Continued
 - Benches & Cubes
 - Proposed Water Line – Final Location

Next Meeting: TBD

Fairfax Water – Proposed Transmission Line – Preliminary Route

